



RM PRO

IP 66 Waterproof
Luminaire

Surface / Pendant

Mareli Ltd



RM PRO is a universal luminaire with IP66 rating suitable for dusty environments with high humidity. RM PRO comes in variety of sizes ranging from 600mm, in increments of 300mm, up to length of 2100mm. Incredibly robust rated with IK10. This fixture comes with the opportunity to adjust the light flow intensity through a dip-switch. Plug and play ready.

Mareli own production line for **Coextrusion**



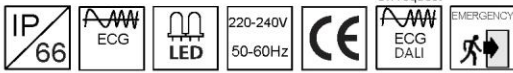
- **Base level** - up to 145lm/W
- **Performance level** - up to 165lm/W
- **Innovative UGR control pattern**
Translucent Polycarbonate diffuser, extruded together with White Polycarbonate UV Stabilized body
- **Light fitting protection: IP66**
- **Selectable output current via DIP SWITCH**
- **Emergency Option for 1 or 3 hours**
- **Standard model - 4000K; CRI>80**
On request 3000K; 5000K; 6500K; CRI>90
- **Long Service Lifetime:**
90,000 H (L80, B10) at $t_p = 50\text{ }^{\circ}\text{C}$

Series RM PRO IP66

Surface / Pendant

LED LIGHT SOURCE

STANDARD



CHARACTERISTICS

The graph below shows Maximum Wattages per size

Lengths:	mA:	Wattages:	Lm at 4000K
L= 600 mm	500mA	20W	2900 lm
L= 900 mm	500mA	32W	4480 lm
L=1200mm	500mA	41W	5740 lm
L=1500mm	500mA	52W	7280 lm
L=1800 mm	500mA	64W	8960 lm
L=2100mm	500mA	76 W	10640 lm

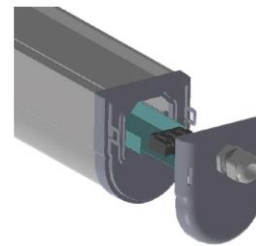
Different Dimensions on request*

Higher efficiency on request*

SPECIFICATIONS

- **Light fitting protection: IP66**
- **Selectable output current via DIP SWITCH**
- **Very low ripple current: < 3%**
- **Mains voltage: 220–240 V ±10%**
- **Mains frequency: 50–60 Hz**
- **Power factor at full load: 0.95**
- **Max. working voltage (UOUT): 250 V**
- **Electronic short-circuit protection**
- **Overload protection**
- **Protection against transient main peaks:**
up to 1 kV (between L and N) and
up to 2 kV (between L, N and PE)
- **Option - Emergency back-up source 1 or 3 hours**
- **Maximum ambient temperature: $t_a = 50\text{ }^\circ\text{C}$**
- **Minimum ambient temperature: $t_a = -15\text{ }^\circ\text{C}$**
- **Lifetime: 90,000 H (L80, B10) at $t_p = 50\text{ }^\circ\text{C}$**
- **Standard model - 4000K; CRI>80**
On request 3000K; 5000K; 6500K; CRI>90
- **Production tolerance of luminous flux and efficiency: ±10%**

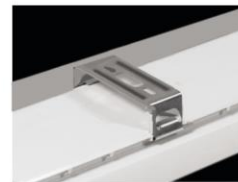
DRAWINGS



Easy terminal block access



Light fitting attachments



A: Direct mounting to the ceiling or wall with the use of screw and stainless steel clips



B: Suspended mounting

C: Integrated sensor on request

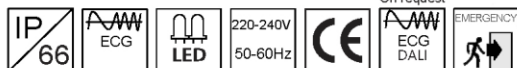
Series RM PRO IP66

Surface / Pendant

Mareli Ltd
www.mareli-bg.com

LED LIGHT SOURCE

STANDARD



Net lumen output	CCT	Power	Wiring	Dimensions	Purchase code
(lm)	(K)	(W)		(mm)	
1650	4000	12	ECG	600	RMPro 600-12-1650/9.4/IP66
1500	3000	12	ECG	600	RMPro 600-12-1500/9.3/IP66
2500	4000	18	ECG	900	RMPro 900-18-2500/9.4/IP66
2250	3000	18	ECG	900	RMPro 900-18-2250/9.3/IP66
4020	4000	29	ECG	1200	RMPro 1200-29-4020/9.4/IP66
3650	3000	29	ECG	1200	RMPro 1200-29-3650/9.3/IP66
4760	4000	35	ECG	1200	RMPro 1200-35-4760/9.4/IP66
4330	3000	35	ECG	1200	RMPro 1200-35-4330/9.3/IP66
5440	4000	41	ECG	1200	RMPro 1200-41-5440/9.4/IP66
4950	3000	41	ECG	1200	RMPro 1200-41-4950/9.3/IP66
5100	4000	36	ECG	1500	RMPro 1500-36-5100/9.4/IP66
4640	3000	36	ECG	1500	RMPro 1500-36-4640/9.3/IP66
5940	4000	44	ECG	1500	RMPro 1500-44-5940/9.4/IP66
5400	3000	44	ECG	1500	RMPro 1500-44-5400/9.3/IP66
6780	4000	51	ECG	1500	RMPro 1500-51-6780/9.4/IP66
6180	3000	51	ECG	1500	RMPro 1500-51-6170/9.3/IP66
5100	4000	36	ECG	1700	RMPro 1700-36-5100/9.4/IP66
4640	3000	36	ECG	1700	RMPro 1700-36-4640/9.3/IP66
5880	4000	42	ECG	1700	RMPro 1700-42-5880/9.4/IP66
5350	3000	42	ECG	1700	RMPro 1700-42-5350/9.3/IP66
5350	4000	52	ECG	1700	RMPro 1700-52-6910/9.4/IP66
6280	3000	52	ECG	1700	RMPro 1700-52-6280/9.3/IP66