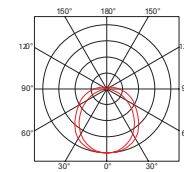


RC PRIME

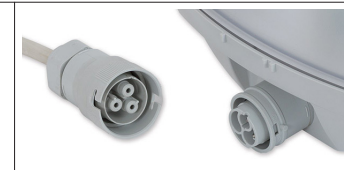
SURFACE / SUSPENDED
IP66 / IK10



RC PRIME



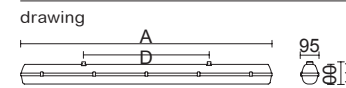
Connector on clients request
Wieland connector



Connector on clients request
Stucchi connector



Side hanger with blocking
It serves to attach the light fitting to the wall with the possibility of its positioning.



Translucent polycarbonate (PC),
UV stable, impact-resistant (IK10)
Fire & ignition resistance (850 C°)



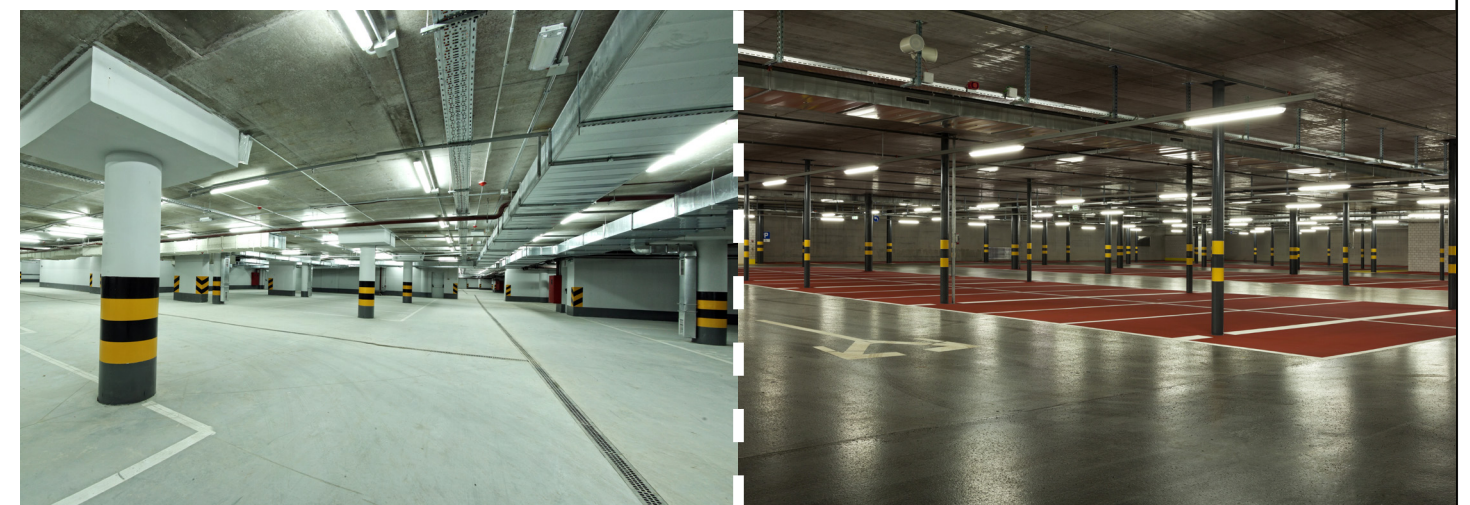
The metal grid protects the luminaire against mechanical damage and unauthorised handling. It is attached to the surface with the use of screws. The surface is treated with the RAL 9003 powder-coated color.

RC PRIME

RC PRIME
Surface / Suspended

LIGHT OUTPUT	up to 7090 lm
EFFICIENCY	up to 136 lm/W
WIRING	ECG, on request: DALI, 1-10V On request: Emergency kit (1h / 3h) 1h / 3h EM Kit can be mounted on: RCPr.120-* / 18W, 22W, 30W 1h / 3h EM Kit can be mounted on: RCPr.150-* / 22W, 27W, 37W
CCT	4000K On request: 3000 K, 5000 K, 6500 K
CRI	≥ 80 Ra
MATERIALS	
> Housing	Grey polycarbonate (PC), UV stable
> Diffuser	Translucent polycarbonate (PC)
> Reflector	Steel sheet, white color (RAL 9003)
> Clips	Stainless steel On request: Polyamide + 15 % glass fibre or Stainless steel + polyamide
LIGHT DISTRIBUTION	Direct
ADVANTAGES	Impact-resistant (IK10), Housing sealed with polyurethane gasket to improve IP66 protection
SURFACE FINISH	Grey polycarbonate (PC)
ACCESSORIES	Stainless steel clips, Connector on clients request, Protection grid, Side hanger with blocking

Net lumen output (lm)	CCT (K)	Power (W)	Wiring	Dimensions (mm)	Weight (kg)	Purchase code
1260	4000	10	ECG	A: 662 D:350	1.30	RCPr.60-10-1260/9.4/IP66SS
1510	4000	12	ECG	A: 662 D:350	1.20	RCPr.60-12-1510/9.4/IP66SS
1950	4000	15	ECG	A: 662 D:350	1.30	RCPr.60-15-1950/9.4/IP66SS
2320	4000	18	ECG	A: 1272 D:700	1.90	RCPr.120-18-2320/9.4/IP66SS
2860	4000	22	ECG	A: 1272 D:700	1.70	RCPr.120-22-2860/9.4/IP66SS
3920	4000	30	ECG	A: 1272 D:700	1.90	RCPr.120-30-3920/9.4/IP66SS
5650	4000	43	ECG	A: 1272 D:700	1.90	RCPr.120-43-5650/9.4/IP66SS
2810	4000	22	ECG	A: 1572 D:940	2.30	RCPr.150-22-2810/9.4/IP66SS
2530	4000	27	ECG	A: 1572 D:940	2.20	RCPr.150-27-2530/9.4/IP66SS
4940	4000	37	ECG	A: 1572 D:940	2.30	RCPr.150-37-4940/9.4/IP66SS
7090	4000	54	ECG	A: 1572 D:940	2.30	RCPr.150-54-7090/9.4/IP66SS



Mareli Ltd. reserves the right to introduce structural changes and modify the luminaires
Luminous flux and connected electrical load are subject to an initial tolerance of +/- 5%. Tolerance of color temperature: +/-150 K.
Unless stated otherwise, the values apply to an ambient temperature of 25°C.