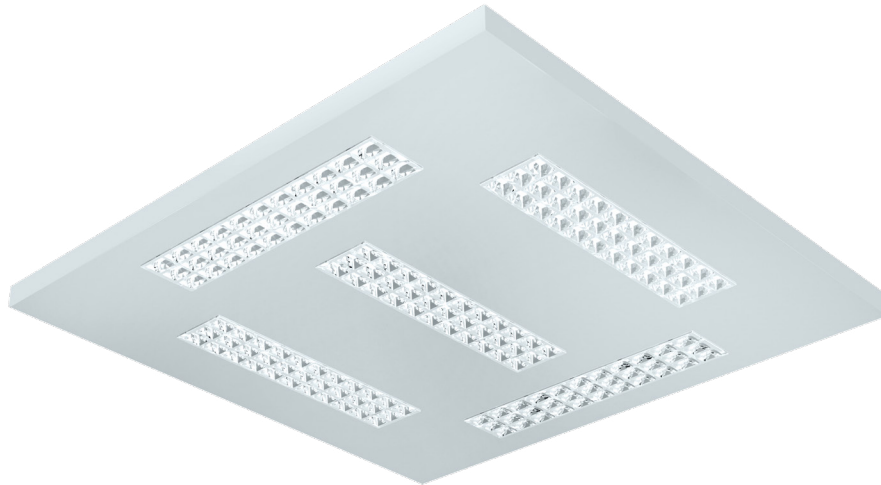


GLIES

RECESSED / SURFACE / SUSPENDED
SQUARE VERSION
(UGR<16)



LED					IP20				5 years warranty	50,000 hrs L80/B10 Ta=25°C	220-240V 50-60Hz		CE
-----	--	--	--	--	------	--	--	--	------------------	----------------------------------	---------------------	--	----

on request

Glies

Glies 5 modules

Recessed, Surface*, Suspended

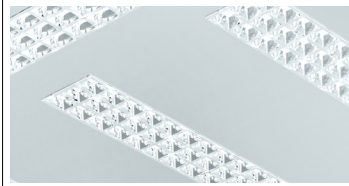
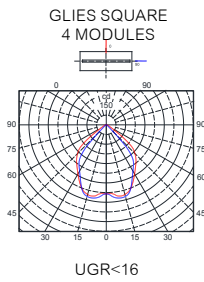
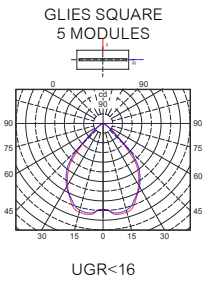
UGR<16

Glies 4 modules

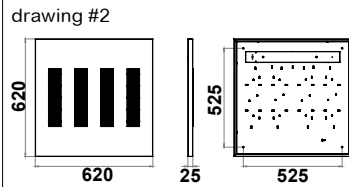
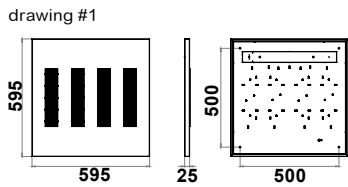
Recessed, Surface*, Suspended

UGR<16

LIGHT OUTPUT	up to 5000 lm	up to 4000 lm
EFFICIENCY	up to 111 lm/W	up to 111 lm/W
WIRING	ECG, on request: DALI, 1-10V On request: Emergency kit (1h, 3h)	ECG, on request: DALI, 1-10V On request: Emergency kit (1h, 3h)
CCT	3000 - 4000K	3000 - 4000K
CRI	≥ 80 Ra	≥ 80 Ra
MATERIALS		
> Housing	Sheet steel	Sheet steel
> Louver	Metallized PMMA + Transparent Polycarbonate	Metallized PMMA + Transparent Polycarbonate
LIGHT DISTRIBUTION	Direct	Direct
SURFACE FINISH	White color (RAL9003); other colors on request	White color (RAL9003); other colors on request
ACCESSORIES	*Surface mounting plate for Glies Square Single Suspenders	*Surface mounting plate for Glies Square Single Suspenders

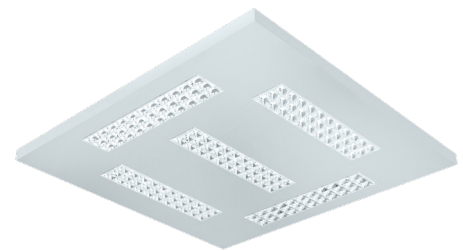


Metallized PMMA + Transparent Polycarbonate



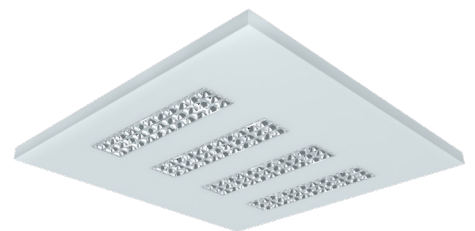
Net lumen output	CCT	Power	Wiring	Dimensions	Weight	ACS	Purchase code
(lm)	(K)	(W)		(mm)	(kg)	#	
3920	3000	37	ECG	drawing #1	3.90	1,3	GLIESQE5-37-3920/4.3/IP20W
4125	4000	37	ECG	drawing #1	3.90	1,3	GLIESQE5-37-4125/4.4/IP20W
4750	3000	45	ECG	drawing #1	3.90	1,3	GLIESQE5-45-4750/4.3/IP20W
5000	4000	45	ECG	drawing #1	3.90	1,3	GLIESQE5-45-5000/4.4/IP20W
Ceiling standard 625x625mm							
3920	3000	37	ECG	drawing #2	4.70	2,3	GLIESQG5-37-3920/4.3/IP20W
4125	4000	37	ECG	drawing #2	4.70	2,3	GLIESQG5-37-4125/4.4/IP20W
4750	3000	45	ECG	drawing #2	4.70	2,3	GLIESQG5-45-4750/4.3/IP20W
5000	4000	45	ECG	drawing #2	4.70	2,3	GLIESQG5-45-5000/4.4/IP20W
#	Accessories (ACS)			Purchase code			
1	Surface mounting plate for 595			ACSGlies595			
2	Surface mounting plate for 620			ACSGlies620			
3	Single suspender			ACSus 1/1.5			

GLIES SQUARE
5 MODULES



Net lumen output	CCT	Power	Wiring	Dimensions	Weight	ACS	Purchase code
(lm)	(K)	(W)		(mm)	(kg)	#	
3140	3000	30	ECG	drawing #1	3.50	1,3	GLIESQE4-30-3140/4.3/IP20W
3300	4000	30	ECG	drawing #1	3.50	1,3	GLIESQE4-30-3300/4.4/IP20W
3800	3000	36	ECG	drawing #1	3.50	1,3	GLIESQE4-36-3800/4.3/IP20W
4000	4000	36	ECG	drawing #1	3.50	1,3	GLIESQE4-36-4000/4.4/IP20W
Ceiling standard 625x625mm							
3140	3000	30	ECG	drawing #2	4.50	2,3	GLIESQG4-30-3140/4.3/IP20W
3300	4000	30	ECG	drawing #2	4.50	2,3	GLIESQG4-30-3300/4.4/IP20W
3800	3000	36	ECG	drawing #2	4.50	2,3	GLIESQG4-36-3800/4.3/IP20W
4000	4000	36	ECG	drawing #2	4.50	2,3	GLIESQG4-36-4000/4.4/IP20W
#	Accessories (ACS)			Purchase code			
1	Surface mounting plate for 595			ACSGlies595			
2	Surface mounting plate for 620			ACSGlies620			
3	Single suspender			ACSus 1/1.5			

GLIES SQUARE
4 MODULES



GLIES

RECESSED / SURFACE / SUSPENDED
LINE VERSION / SQUARE 2 MODULES
(UGR<19)



LED		ECG	IP20	ECG DALI	ECG 1-10V	EMERGENCY	5 years warranty	50,000 hrs L80/B10 Ta=25°C	220-240V 50-60Hz		CE
-----	--	-----	------	----------	-----------	-----------	------------------	----------------------------------	---------------------	--	----

on request

Glies

Glies 4 or 5 modules

Recessed, Surface*, Suspended

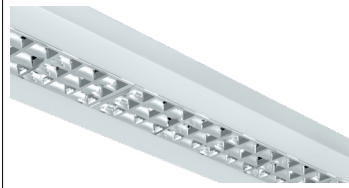
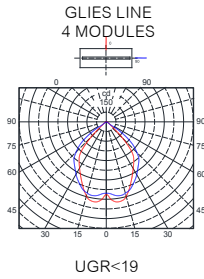
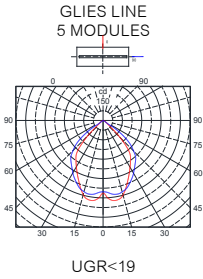
UGR<19

Glies 2 modules

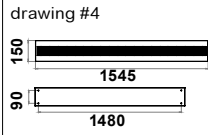
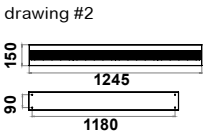
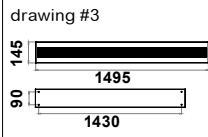
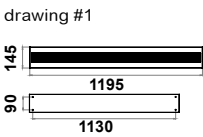
Surface, Suspended

UGR<19

LIGHT OUTPUT	up to 5000 lm	up to 2000 lm
EFFICIENCY	up to 111 lm/W	up to 110 lm/W
WIRING	ECG, on request: DALI, 1-10V On request: Emergency kit (1h, 3h)	ECG, on request: DALI, 1-10V On request: Emergency kit (1h, 3h)
CCT	3000 - 4000K	3000 - 4000K
CRI	≥ 80 Ra	≥ 80 Ra
MATERIALS		
> Housing	Sheet steel	Sheet steel
> Louver	Metallized PMMA + Transparent Polycarbonat	Metallized PMMA + Transparent Polycarbonat
LIGHT DISTRIBUTION	Direct	Direct
ACCESSORIES	*Surface mounting plate for Glies Line Double Suspenders	Single Suspenders



Metallized PMMA + Transparent Polycarbonate



Net lumen output	CCT	Power	Wiring	Dimensions	Weight	ACS	Purchase code
(lm)	(K)	(W)		(mm)	(kg)	#	
3920	3000	37	ECG	drawing #1	2.50	1,3	GLIESLE5-37-3920/4.3/IP20W
4125	4000	37	ECG	drawing #1	2.50	1,3	GLIESLE5-37-4125/4.4/IP20W
4750	3000	45	ECG	drawing #1	2.50	1,3	GLIESLE5-45-4750/4.3/IP20W
5000	4000	45	ECG	drawing #1	2.50	1,3	GLIESLE5-45-5000/4.4/IP20W
Ceiling standard 625x625mm							
3920	3000	37	ECG	drawing #2	2.50	2,3	GLIESLG5-37-3920/4.3/IP20W
4125	4000	37	ECG	drawing #2	2.50	2,3	GLIESLG5-37-4125/4.4/IP20W
4750	3000	45	ECG	drawing #2	2.50	2,3	GLIESLG5-45-4750/4.3/IP20W
5000	4000	45	ECG	drawing #2	2.50	2,3	GLIESLG5-45-5000/4.4/IP20W
#	Accessories (ACS)			Purchase code			
1	Surface mounting plate for 595			ACSGlies595			
2	Surface mounting plate for 620			ACSGlies620			
3	Double suspender			ACSus 2/1.5			

GLIES LINE
5 MODULES



Net lumen output	CCT	Power	Wiring	Dimensions	Weight	ACS	Purchase code
(lm)	(K)	(W)		(mm)	(kg)	#	
3800	3000	36	ECG	drawing #3	2.50	1,3	GLIESLE4-36-3800/4.3/IP20W
4000	4000	36	ECG	drawing #3	2.50	1,3	GLIESLE4-36-4000/4.4/IP20W
3140	3000	30	ECG	drawing #3	2.50	1,3	GLIESLE4-30-3140/4.3/IP20W
3300	4000	30	ECG	drawing #3	2.50	1,3	GLIESLE4-30-3300/4.4/IP20W
Ceiling standard 625x625mm							
3800	3000	36	ECG	drawing #4	2.90	2,3	GLIESLG4-36-3800/4.3/IP20W
4000	4000	36	ECG	drawing #4	2.90	2,3	GLIESLG4-36-4000/4.4/IP20W
3140	3000	30	ECG	drawing #4	2.90	2,3	GLIESLG4-30-3140/4.3/IP20W
3300	4000	30	ECG	drawing #4	2.90	2,3	GLIESLG4-30-3300/4.4/IP20W
#	Accessories (ACS)			Purchase code			
1	Surface mounting plate for 595			ACSGlies595			
2	Surface mounting plate for 620			ACSGlies620			
3	Double suspender			ACSus 2/1.5			

GLIES LINE
4 MODULES



Net lumen output	CCT	Power	Wiring	Dimensions	Weight	Purchase code
(lm)	(K)	(W)		(mm)	(kg)	
1570	3000	15	ECG	W:318, L:330, H:30	2.50	GLIESQ2-15-1570/4.3/IP20W+ACSGlies320
1650	4000	15	ECG	W:318, L:330, H:30	2.50	GLIESQ2-15-1650/4.4/IP20W+ACSGlies320
1900	3000	19	ECG	W:318, L:330, H:30	2.50	GLIESQ2-19-1900/4.3/IP20W+ACSGlies320
2000	4000	19	ECG	W:318, L:330, H:30	2.50	GLIESQ2-19-2000/4.4/IP20W+ACSGlies320
#	Accessories (ACS)			Purchase code		
1	Single suspenders			ACSus 1/1.5		

GLIES
2 MODULES



Mareli Ltd. reserves the right to introduce structural changes and modify the luminaires Luminous flux and connected electrical load are subject to an initial tolerance of +/- 5%. Tolerance of color temperature: +/-150 K. Unless stated otherwise, the values apply to an ambient temperature of 25°C.